



# WISE SERIES

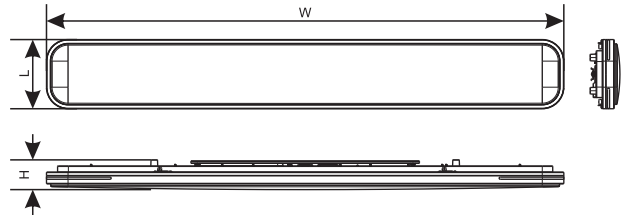
SUITABLE FOR HOME AND OFFICE. FINE SELECTED MATERIAL FOR DURABLE AND COMFORTABLE LIGHTING.

Powered by

tuya<sup>®</sup>

Intelligence  
Inside

# WISE



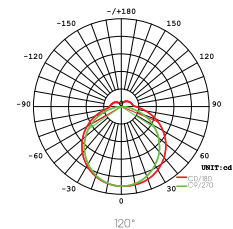
## Parameters

Model	Power	LED Qty	Luminous Flux	Efficacy	Size
SF5219-L25W	25W	2835SMD/9V-1W/30LEDS	2000LM	80Lm/W	520*520*82mm
SF5230-L30W	30W	2835SMD/9V-1W/36LEDS	2400LM	80Lm/W	480*480*72mm
SF5252-L60W	60W	2835SMD/9V-1W/72LEDS	4800LM	80Lm/W	520*300*82mm
SF6838-L60W	60W	2835SMD/9V-1W/72LEDS	4800LM	80Lm/W	520*190*82mm
SF9019-L50W	50W	2835SMD/9V-1W/60LEDS	4000LM	80Lm/W	680*380*82mm
SF1200A-L60W	60W	2835SMD/9V-1W/84LEDS	4800LM	80Lm/W	900*190*82mm
SF1200B-L60W	60W	2835SMD/9V-1W/84LEDS	4800LM	80Lm/W	1200*160*80mm
SF1200C-L60W	60W	2835SMD/9V-1W/84LEDS	4800LM	80Lm/W	1200*160*80mm

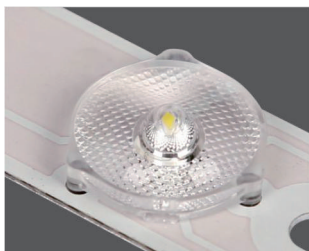
Input Voltage: AC180-240V  
 Frequency: 50/60Hz  
 Power Factors:  $\geq 0.9$   
 Efficiency: 90%  
 CCT: 6000 ~ 6500K  
 CRI: Ra $\geq 80$   
 Beam Angle: 120°  
 Frame Material: Aluminum 6063  
 Base Material: Iron Q235  
 Lampshade: PS  
 Body Color: White  
 Input Cable: 0.5mm<sup>2</sup>  
 Installation: Mount  
 Protection: IP20  
 Environment: -20°C ~ 40°C  
 Longevity: 20,000h

## Packing

Model	Weight/PC	Qty/CTN	Inner Box Size	Master CTN
SF5219-L25W	1.6kgs	6	59x23x9cm	61x48x29
SF5230-L30W	2kgs	6	59x34x9cm	70x61x29
SF5252-L60W	3.3kgs	3	59X56X9cm	61x58x29
SF6838-L60W	3.1kgs	3	75x42x9cm	76x44x29
SF9019-L50W	2.4kgs	3	97X23X9cm	99X25X28
SF1200A-L60W	2.2kgs	3	127X20X10cm	128X31X22
SF1200B-L60W	2.1kgs	3	127X20X9cm	128X28X22
SF1200C-L60W	2.1kgs	3	127X20X9cm	128X28X22



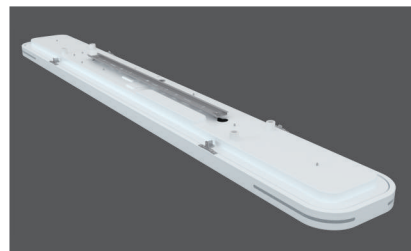
## DETAILS



Optical diffuse lens, anti-glare



Clamp



Quick Installation Mount