

EASE SERIES

WORK ENVIRONMENT IS COMFORTABLY LIGHTED UP AND
ENERGETICALLY ACCOMPLISHING THE TASKS.

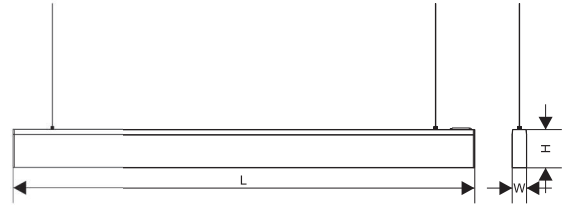
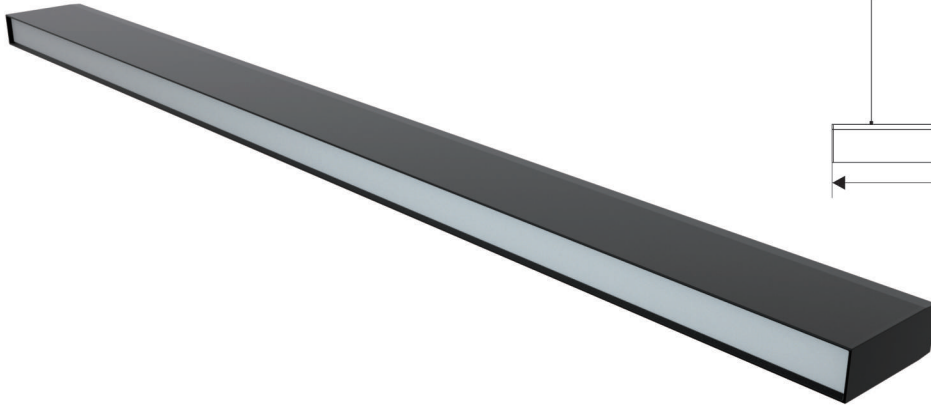
Powered by

tuya[®]

Intelligence
Inside



EASE



Parameters

Model	Power	LED Qty	Luminous Flux	Efficacy	Size
38100P2	36W	2835SMD/9V-1W/45LEDS	2160LM	60lm/W	1204*38*100mm

Input Voltage:AC180-240V
 Frequency:50/60Hz
 Power Factors:≥0.5
 CCT:4000~6500K
 CRI:Ra≥80
 Beam Angle:120°
 Main Material:Aluminum+PS
 Body Color:Sand Black
 Input Cable:0.5mm²
 Installation:Suspended
 Protection:IP20
 Environment:-20°C~50°C
 Longevity:20000h
 Driver:3AAA Constant Current



LED inside

Packing

Model	Weight/PC	Qty/CTN	Inner Box Size	Master CTN
38100P2	1.55kg	5	-	126*20*11.5cm

DETAILS

